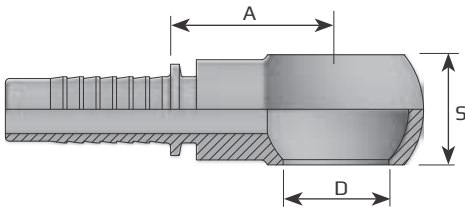


Metrisks BANJO

Metric BANJO

Метрический банджо

**BANJO**



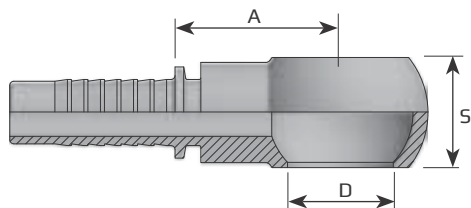
Kods Code Код	Šļūtene Hose Рукав			Vītne Thread Резьба	Izmēri Dimensions Размеры			Spiediens Pressure Давление	
	D.N.	Hose Inch	Diam mm		D mm	S mm	A mm	Bar	Psi
<b>OM0310</b>	-3	3/16"	4.8	M10 x 1	10.1	10	19.5		
<b>OM0312</b>	-3	3/16"	4.8	M12 x 1.5	12.1	12	21		
<b>OM0314</b>	-3	3/16"	4.8	M14 x 1.5	14.1	14	23		
<b>OM0410</b>	-4	1/4"	6.4	M10 x 1	10.1	10	24		
<b>OM0412</b>	-4	1/4"	6.4	M12 x 1.5	12.1	11	23		
<b>OM0414</b>	-4	1/4"	6.4	M14 x 1.5	14.1	14	23		
<b>OM0416</b>	-4	1/4"	6.4	M16 x 1.5	16.1	17	25		
<b>OM0418</b>	-4	1/4"	6.4	M18 x 1.5	18.1	20	29		
<b>OM0512</b>	-5	5/16"	7.9	M12 x 1.5	12.1	12	23		
<b>OM0514</b>	-5	5/16"	7.9	M14 x 1.5	14.1	14	24.5		
<b>OM0516</b>	-5	5/16"	7.9	M16 x 1.5	16.1	17	27		
<b>OM0518</b>	-5	5/16"	7.9	M18 x 1.5	18.1	20	29		
<b>OM0520</b>	-5	5/16"	7.9	M20 x 1.5	20.1	22	28		
<b>OM0522</b>	-5	5/16"	7.9	M22 x 1.5	22.1	22	28		
<b>OM0614</b>	-6	3/8"	9.5	M14 x 1.5	14.1	14	27		
<b>OM0616</b>	-6	3/8"	9.5	M16 x 1.5	16.1	17	27		

Metrisks BANJO

Metric BANJO

Метрический банджо

**BANJO**



Kods Code Код	Šļūtene Hose Рукав			Vītne Thread Резьба	Izmēri Dimensions Размеры			Spiediens Pressure Давление	
	D.N.	Hose Inch	Diam mm		D	S	A	Bar	Psi
<b>OM0618</b>	-6	3/8"	9.5	M18 x 1.5	18.1	20	28		
<b>OM0620</b>	-6	3/8"	9.5	M20 x 1.5	20.1	22	28.5		
<b>OM0622</b>	-6	3/8"	9.5	M22 x 1.5	22.1	22	28.5		
<b>OM0818</b>	-8	1/2"	12.8	M18 x 1.5	18.1	20	30		
<b>OM0820</b>	-8	1/2"	12.8	M20 x 1.5	20.1	22	34		
<b>OM0822</b>	-8	1/2"	12.8	M22 x 1.5	22.1	22	34		
<b>OM0826</b>	-8	1/2"	12.8	M26 x 1.5	26.5	30	34.5		
<b>OM1022</b>	-10	5/8"	16	M22 x 1.5	22.1	22	34		
<b>OM1026</b>	-10	5/8"	16	M26 x 1.5	26.5	30	34.5		
<b>OM1226</b>	-12	3/4"	19	M26 x 1.5	26.5	30	35		
<b>OM1230</b>	-12	3/4"	19	M30 x 1.5	30.1	36	41.5		
<b>OM1630</b>	-16	1"	25.4	M30 x 1.5	30.1	36	41.5		