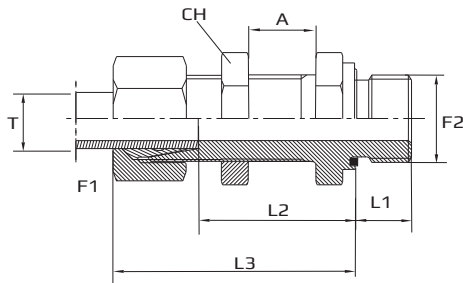


Caurejoši adapteri ar ārējo DIN un BSP (colligo) cilindrisku ārējo vītņi

Bulkhead connection form E

Переборочный коннектор с внешними DIN и дюймовой резьбами



F1 METR.
F2 BSPP

Tikai korpusam pievienot kodu .1
Body only add code .1
Только корпус добавить код .1

(APPMExxx.1)

Kods Code Код	Vītne Thread Резьба		Izmēri Dimensions Размеры						PN Bar	Svars Weight Вес	Sērija Series Серия
	F1	F2	T1 mm	CH mm	A mm	L1 mm	L2 mm	L3 mm			
APPME06LMG02EL	12x1,5	1/8"	6	17	16	8	32,5	47,5	315	L	
APPME08LMG04EL	14x1,5	1/4"	8	19	16	12	34	49	315	L	
APPME10LMG04EL	16x1,5	1/4"	10	22	16	12	36	51	315	L	
APPME12LMG06EL	18x1,5	3/8"	12	24	16	12	37,5	52,5	315	L	
APPME15LMG08EL	22x1,5	1/2"	15	27	16	14	41	56	315	L	
APPME18LMG08EL	26x1,5	1/2"	18	32	16	14	44,5	61	315	L	
APPME22LMG12EL	30x2	3/4"	22	36	16	16	47,5	64	160	L	
APPME28LMG16EL	36x2	1"	28	41	16	18	50,5	67	160	L	
APPME35LMG20EL	45x2	1.1/4"	35	50	16	20	52,5	74	160	L	
APPME42LMG24EL	52x2	1.1/2"	42	60	16	22	53	76	160	L	
APPME06SMG04EL	14x1,5	1/4"	6	19	16	12	38	53	630	S	
APPME08SMG04EL	16x1,5	1/4"	8	22	16	12	39	54	630	S	
APPME10SMG06EL	18x1,5	3/8"	10	24	16	12	41,5	58	630	S	
APPME12SMG06EL	20x1,5	3/8"	12	27	16	12	42,5	59	630	S	
APPME14SMG08EL	22x1,5	1/2"	14	30	16	14	46	64	630	S	
APPME16SMG08EL	24x1,5	1/2"	16	32	16	14	45,5	64	400	S	
APPME20SMG12EL	30x2	3/4"	20	41	16	16	48,5	72	400	S	
APPME25SMG16EL	36x2	1"	25	46	16	18	52	76	400	S	
APPME30SMG20EL	42x2	1.1/4"	30	50	16	20	55,5	82	400	S	
APPME38SMG24EL	52x2	1.1/2"	38	65	16	22	56	87	315	S	