

# SF2 250 - 350

Flow rates to 160 l/min



## Technical data

### Filter housing (Materials)

- Filter body: Aluminium
- Cover: Nylon
- Valve: Nylon - Steel
- Anti-Emptying valve: Steel

### Temperature

- From -25 °C to +110 °C

### Bypass valve

- Opening pressure 30 kPa ±10%

### Elements

- Fluid flow through the filter element from IN to OUT.

### Seals

- Standard NBR series A
- Optional FPM series V

SF2 250-350 FILTERS MOUNTING SEE ON TOP DRAWING

### Weights (kg)

- SF2 250 2,6
- SF2 350 2,6

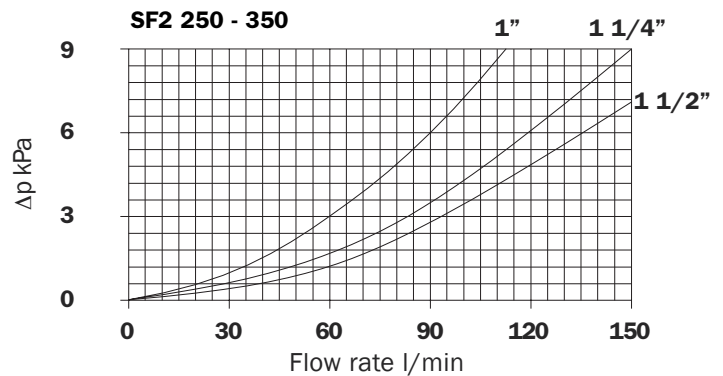
### Recommended maximum flow rate

- Pressure drop of filter assembly equal to  $\Delta p$  8 kPa.
- Oil kinematic viscosity 30 mm<sup>2</sup>/s (cSt).
- Density 0,86 kg/dm<sup>3</sup>.

### Filter housings $\Delta p$ pressure drop

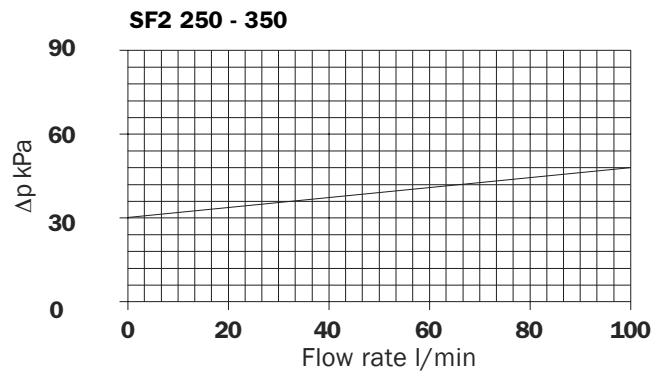
The curves are plotted utilising mineral oil with density of 0,86 kg/dm<sup>3</sup> to ISO 3968.

$\Delta p$  varies proportionally with density.



### Valves

#### Bypass valve pressure drop

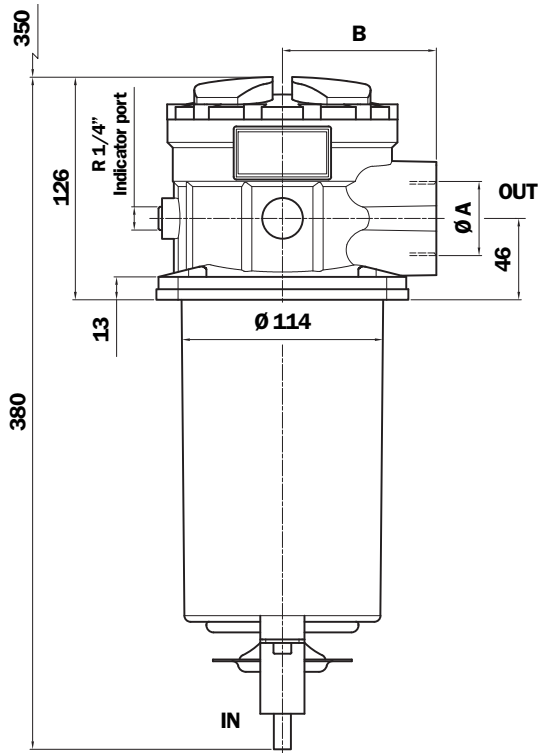


	Filtration		
	P10	P25	M25-M60-M90-250
<b>SF2 250</b>	70	90	100
Option 1"	Flow rate l/min		

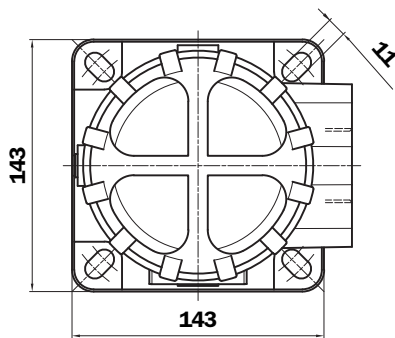
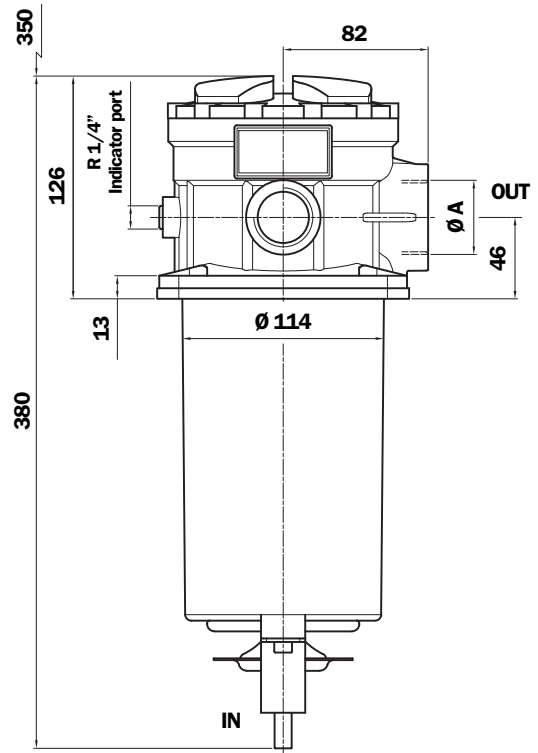
	Filtration				
	P10	P25	M25	M60	M90-250
<b>SF2 250</b>	80	115	130	135	140
Option 1 1/4"	Flow rate l/min				

	Filtration				
	P10	P25	M25	M60	M90-250
<b>SF2 250</b>	85	125	145	150	160
Option 1 1/2"	Flow rate l/min				

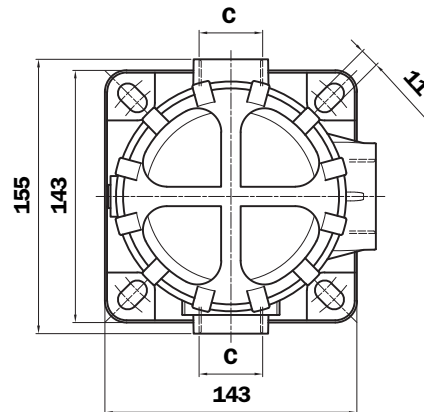
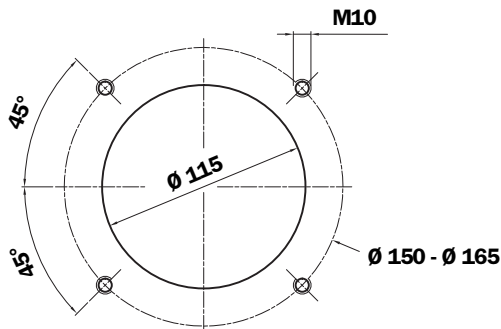
# SF2 250



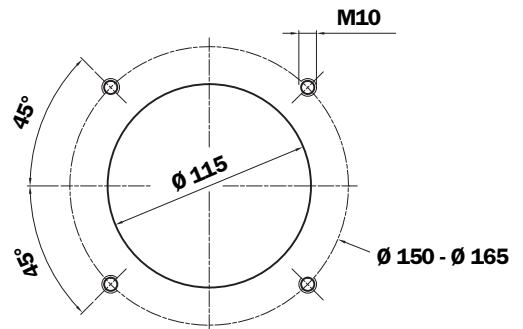
# SF2 350



Holes on the tank



Holes on the tank



## SF2 250 - Thread connections

Type	A	B
G1	G 1 1/2"	82
G2	1 1/2" NPT	82
G3	SAE 24 - 1 7/8" - 12 UN	82
G4	G 1 1/4"	82
G5	1 1/4" NPT	82
G6	SAE 20 - 1 5/8" - 12 UN	82
G7	G 1"	82
G8	1" NPT	82
G9	SAE 16 - 1 5/16" - 12 UN	82

## SF2 250 - Flange connections \*

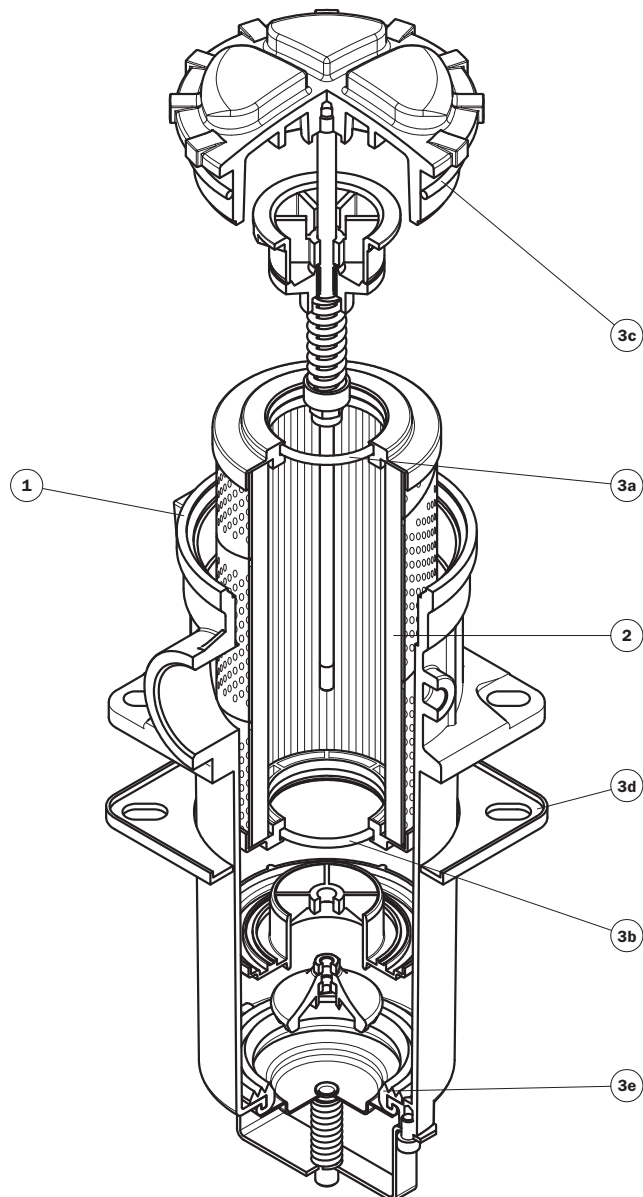
Type	A
F1	1 1/2" SAE 3000 psi/M
F2	1 1/2" SAE 3000 psi/UNC

\*Connections table "SAE flange" see page 9

## SF2 350 - Thread connections

Type	A	C
G1	G 1 1/2"	G 1"
G3	SAE 24 - 1 7/8" - 12 UN	SAE 16 - 1 5/16" - 12 UN

# Spare parts



Item	Description	Q.ty	FILTER Series SF2 250 - 350	
<b>1</b>	Filter assembly	1	See order table	
<b>2</b>	Filter element	1	See order table	
<b>3</b>	Seal Kit	1	NBR 02050586	FPM 02050587
<b>3a</b>	Filter element top seal	1	O-R Metric Ø 50 x 4	
<b>3b</b>	Filter element bottom seal	1	O-R Metric Ø 50 x 4	
<b>3c</b>	Cover seal	1	O-R Metric Ø 113 x 4	
<b>3d</b>	Head seal	1	01026636	01026367
<b>3e</b>	Valve seal	1	01026209	01026210

# Ordering information SF2 250 - 350

## Filter assembly SF2

<b>1</b>	<b>2</b>	<b>3</b>	<b>4</b>	<b>5</b>	<b>7</b>
<input type="checkbox"/>	<input type="checkbox"/>	<input type="checkbox"/>	<input type="checkbox"/>	<input type="checkbox"/>	<input type="checkbox"/>

**Example: SF2**      **350**      **A**      **G1**      **H**      **M25**      **P01**

## Filter element SF

<b>1</b>	<b>5</b>	<b>6</b>	<b>7</b>
<input type="checkbox"/>	<input type="checkbox"/>	<input type="checkbox"/>	<input type="checkbox"/>

**Example: SF**      **250**      **M25**      **N**      **P01**

### 1 - Style

Filter	Filter element
<b>250</b>	<b>250</b>
<b>350</b>	<b>250</b>

### 2 - Filter seals & Treatment

<b>A</b>	NBR
<b>V</b>	FPM
<b>W</b>	NBR, Filter body anodized. Filter element compatible with fluid HFA, HFB, HFC (only for filter element type Mxx)
<b>Z</b>	FPM, Filter body anodized. Filter element compatible with fluid HFA, HFB, HFC (only for filter element type Mxx)

### 3 - Connections

#### Threaded SF2 250

Type	A
<b>G1</b>	G 1 1/2"
<b>G2</b>	1 1/2" NPT
<b>G3</b>	SAE 24 - 1 7/8" - 12 UN
<b>G4</b>	G 1 1/4"
<b>G5</b>	1 1/4" NPT
<b>G6</b>	SAE 20 - 1 5/8" - 12 UN
<b>G7</b>	G 1"
<b>G8</b>	1" NPT
<b>G9</b>	SAE 16 - 1 5/16" - 12 UN

#### Flanged

Type	A
<b>F1</b>	1 1/2" SAE 3000 psi/M
<b>F2</b>	1 1/2" SAE 3000 psi/UNC

#### Flanged

#### SF2 350

Type	A	C
<b>G1</b>	G 1 1/2"	G 1"
<b>G3</b>	SAE 24 - 1 7/8" - 12 UN	SAE 16 - 1 5/16" - 12 UN

### 4 - Bypass - Magnet

<b>H</b>	Without bypass - without magnet
<b>R</b>	With bypass - with magnet
<b>S</b>	With bypass - without magnet
<b>Q</b>	Without bypass - with magnet

### 5 - Filter element

<b>M25</b>	Wire mesh 25 µm	Nominal Filtration
<b>M60</b>	Wire mesh 60 µm	
<b>M90</b>	Wire mesh 90 µm	
<b>M250</b>	Wire mesh 250 µm	
<b>P10</b>	Resin - Impregnated paper	Nominal Filtration
<b>P25</b>	Resin - Impregnated paper	

### 6 - Filter element seals

<b>N</b>	NBR
<b>V</b>	FPM
<b>W*</b>	NBR (only for filter element type wire mesh)
<b>Z*</b>	FPM (only for filter element type wire mesh)

### 7 - Option

<b>P01</b>	MP Filtri standard
------------	--------------------

**\* Compatible with fluid HFA, HFB, HFC:  
P10 - P25 not compatible with HFA, HFB, HFC**

**For Clogging Indicator:  
See page 318**

**MP Filtri** - The filter functions as described in this bulletin are valid exclusively for original MP Filtri filter elements and replacement parts. All rights reserved.

The data in this publication are purely guideline. MP Filtri reserves the right to make changes to the models described herein at any time it deems fit in relation to technical or commercial requirements. The colours of the products shown on the cover are purely guideline. Copyright. All rights reserved.